



**Education  
Partnership  
Trust**

Creating outstanding schools  
which transform learning, lives  
and communities

# SEND INFORMATION REPORT

**Document Control**

<b>This document has been approved for operation within:</b>	All Trust Establishments
<b>Date effective from</b>	September 2023
<b>Date next review due by</b>	September 2024
<b>Review period</b>	Annually

## CONTENTS

1.0	What types of SEN does the school provide for? .....	4
2.0	Which staff will support my child and what training have they had? .....	5
3.0	What should I do if I think my child has SEN? .....	5
4.0	How will the school know if my child needs SEN support? .....	6
5.0	How will the school measure my child's progress? .....	7
6.0	How will I be involved in decisions made about my child's education? .....	7
7.0	How will my child be involved in decisions made about their education? .....	8
8.0	How will the school adapt its teaching for my child? .....	8
9.0	How will the school evaluate whether the support in place is helping my child? .....	9
10.0	How will the school resources be secured for my child? .....	9
11.0	How will the school make sure my child is included in activities alongside pupils who don't have SEND? .....	9
12.0	How does the school make sure the admissions process is fair for pupils with SEN or a disability? .....	10
13.0	How does the school support pupils with disabilities? .....	10
14.0	How will the school support my child's mental health and emotional and social development? .....	10
15.0	What support will be available for my child as they transition between classes or setting or in preparing for adulthood? .....	10
16.0	What support is in place for looked-after and previously looked-after children with SEN? .....	11
17.0	What should I do if I have a complaint about my child's SEN Support? .....	11
18.0	What support is available for me and my family? .....	11
19.0	Glossary .....	12

Dear parents and carers,

The aim of this information report is to explain how we implement our SEND policy. In other words, we want to show you how SEND support works in our school.

If you want to know more about our arrangements for SEND, read our SEND policy. You can find it on our website [SEND – Atherton High School](#)

**Note:** If there are any terms we've used in this information report that you're unsure of, you can look them up in the Glossary at the end of the report.

### 1.0 What types of SEN does the school provide for?

Our school provides for pupils with the following needs:

Area of need	Condition
<b>Communication and interaction</b>	Autism spectrum disorder
	Speech and language difficulties
<b>Cognition and learning</b>	Specific learning difficulties, including dyslexia, dyspraxia, dyscalculia
	Moderate learning difficulties
	Severe learning difficulties
<b>Social, emotional and mental health</b>	Attention deficit hyperactive disorder (ADHD)
	Attention deficit disorder (ADD)
<b>Sensory and/or physical</b>	Hearing impairments
	Visual impairment
	Multi-sensory impairment
	Physical impairment

## 2.0 Which staff will support my child and what training have they had?

### Our special educational needs co-ordinator, or SENCO:

Mr C McNamara (Assistant Headteacher – SENDCo and Personal Development)

Mrs Julie Lowe (SENCO)

### Class/subject teachers

All of our teachers receive in-house SEN training, and are supported by the SENCO to meet the needs of pupils who have SEN.

Outline any external training your staff have done.

### Teaching assistants (TAs)

We have a team of five TAs, including three higher-level teaching assistants (HLTAs) who are trained to deliver SEN provision.

All of our TAs/HLTAs are trained to deliver interventions such as phonics, sounds write, maths recovery and social stories.

In the last academic year, TAs have been trained in reading interventions and delivering social stories. The reading interventions are designed to increase students' functional and chronological reading ages so that they are able to achieve greater progress in all school curriculums. The social stories are designed to help students overcome their social and communication barriers.

### External agencies and experts

Sometimes we need extra help to offer our pupils the support that they need. Whenever necessary we will work with external support services to meet the needs of our pupils with SEN and to support their families. These include:

- Educational Psychology.
- Speech and language therapy.
- TESS.
- School Nurse.
- Hearing Services.
- Inclusion Support Service (advisory teachers).
- Outreach Service.
- Occupational therapy.
- Physiotherapy.
- Engagement Centre.
- Virtual Schools.
- SEND team from Local Authority.
- CAMHS (Child and Adolescent Mental Health Service).
- Children's Social Care.
- Paediatrician.

## 3.0 What should I do if I think my child has SEN?

Tell us about your concerns

We will invite you to a meeting to discuss them

We will decide whether your child needs SEN support

If you think your child might have a SEND need the first person you should tell is your child's Head of Year at [enquiries@athertonhigh.com](mailto:enquiries@athertonhigh.com)

They will pass the message on to our SENCO, Carl McNamara/Julie Lowe, who will be in touch to discuss your concerns.

You can also contact the SENCO directly at [enquiries@athertonhigh.com](mailto:enquiries@athertonhigh.com)

We will meet with you to discuss your concerns and try to get a better understanding of what your child's strengths and difficulties are.

Together we will decide what outcomes to seek for your child and agree on next steps.

We will make a note of what's been discussed and add this to your child's record. You will also be given a copy of this.

If we decide that your child needs SEN support, we will formally notify you in writing and your child will be added to the school's SEND register.

#### 4.0 How will the school know if my child needs SEN support?

All our class teachers are aware of SEN and are on the lookout for any pupils who aren't making the expected level of progress in their schoolwork or socially.

If the teacher notices that a pupil is falling behind, they try to find out if the pupil has any gaps in their learning. If they can find a gap, they will give the pupil the support they need through adaptive teaching and formative assessment to try to fill it. Pupils who don't have SEN usually make progress quickly once the gap in their learning has been filled.

If the pupil is still struggling to make the expected progress, the teacher will talk to the SENCO, and will contact you to discuss the possibility that your child has SEN.

The SENCO will observe the pupil in the classroom and socially to see what their strengths and difficulties are. They will have discussions with your child's teacher/s, to see if there have been any issues with, or changes in, their progress, attainment or behaviour. They will also compare your child's progress and development with their peers and available national data.

The SENCO will ask for your opinion and speak to your child to get their input as well. They may also, where appropriate, ask for the opinion of external experts such as a speech and language therapist, an educational psychologist, or a paediatrician.

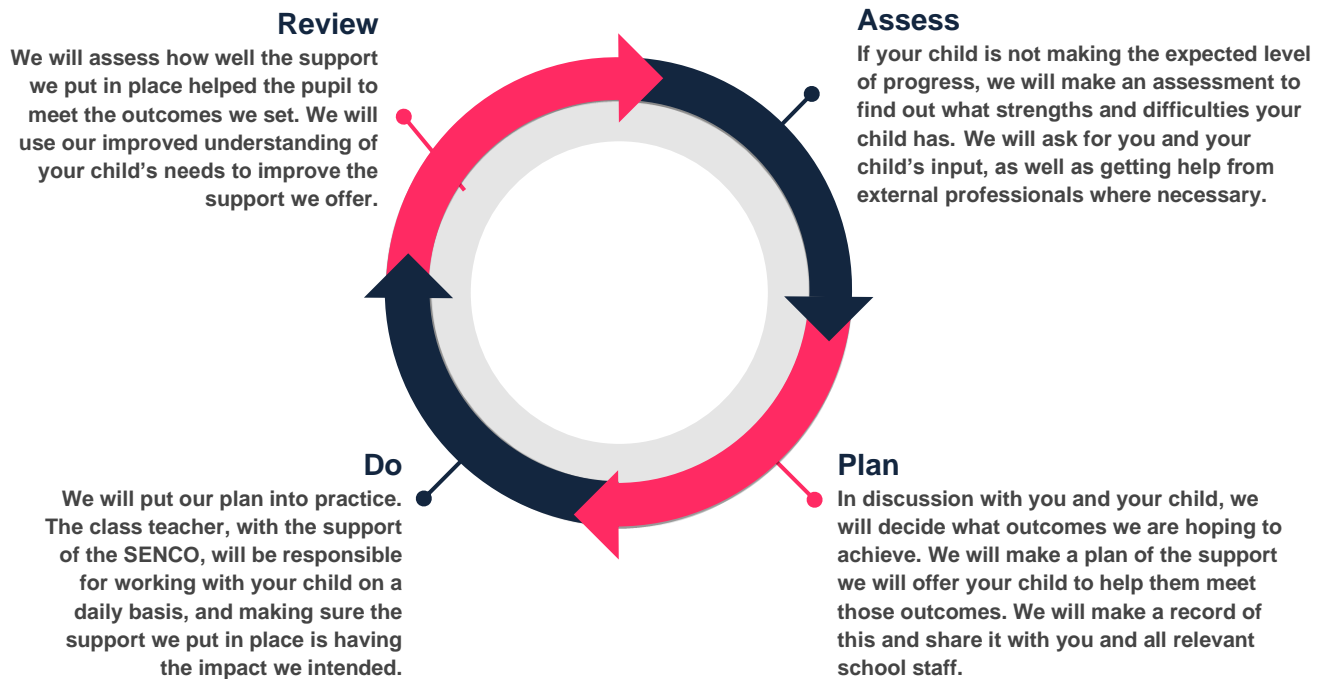
Based on all of this information, the SENCO will decide whether your child needs SEN support. You will be told the outcome of the decision in writing.

If your child does need SEN support, their name will be added to the school's SEN register, and the SENCO will work with you to create a SEN support plan for them.

## 5.0 How will the school measure my child's progress?

We will follow the 'graduated approach' to meeting your child's SEN needs.

The graduated approach is a 4-part cycle of **assess, plan, do, review**.



As a part of the planning stage of the graduated approach, we will set outcomes that we want to see your child achieve.

Whenever we run an intervention with your child, we will assess them before the intervention begins. This is known as a 'baseline assessment'. We do this so we can see how much impact the intervention has on your child's progress.

We will track your child's progress towards the outcomes we set over time and improve our offer as we learn what your child responds to best.

This process will be continual. If the review shows a pupil has made progress, they may no longer need the additional provision made through SEN support. For others, the cycle will continue and the school's targets, strategies and provisions will be revisited and refined.

## 6.0 How will I be involved in decisions made about my child's education?

We will provide two reports per academic year on your child's progress.

You and your child will be met on at least three occasions during the academic year by a combination of the SEND team and teachers to:

- Set clear outcomes for your child's progress.
- Review progress towards those outcomes.
- Discuss the support we will put in place to help your child make that progress.
- Identify what we will do, what we will ask you to do, and what we will ask your child to do.

The SENCO may also attend these meetings to provide extra support.

We know that you're the expert when it comes to your child's needs and aspirations. So we want to make sure you have a full understanding of how we're trying to meet your child's needs, so that you can provide insight into what you think would work best for your child.

We also want to hear from you as much as possible so that we can build a better picture of how the SEN support we are providing is impacting your child outside of school.

If your child's needs or aspirations change at any time, please let us know right away so we can keep our provision as relevant as possible.

After any discussion we will make a record of any outcomes, actions and support that have been agreed. This record will be shared with all relevant staff, and you will be given a copy.

If you have concerns that arise between these meetings, please contact [enquiries@athertonhigh.com](mailto:enquiries@athertonhigh.com)

#### **7.0 How will my child be involved in decisions made about their education?**

The level of involvement will depend on your child's age, and level of competence. We recognise that no two children are the same, so we will decide on a case-by-case basis, with your input.

- We may seek your child's views by asking them to:
- Attend meetings to discuss their progress and outcomes
- Prepare a presentation, written statement, video, drawing, etc.
- Discuss their views with a member of staff who can act as a representative during the meeting
- Complete a survey

#### **8.0 How will the school adapt its teaching for my child?**

Your child's teacher/s is/are responsible and accountable for the progress and development of all the pupils in their class.

High-quality teaching is our first step in responding to your child's needs. We will make sure that your child has access to an ambitious, broad and balanced curriculum in every year they are at our school.

We will adapt how we teach to suit the way the pupil works best and to fill any gaps that are identified in your child's learning. There is no 'one size fits all' approach to adapting the delivery of the curriculum, we work on a case-by case basis to make sure the adaptations we make are meaningful to your child.

These adaptations include:

- Adapting the delivery of our curriculum to make sure all pupils are able to access it, for example, by grouping, 1-to-1 work, adapting the teaching style or activities set in the lesson, etc.
- Adapting our teaching, for example, giving longer processing times, pre-teaching of key vocabulary, reading instructions aloud, etc.
- Adapting our resources and staffing



- Using recommended aids, such as laptops, coloured overlays, visual timetables, larger font, etc.
- Teaching assistants will support pupils on a 1-to-1 basis when [add details here]
- Teaching assistants will support pupils in small groups when [add details here]
- The school's accessibility plan can be found here [Policies – Atherton High School](#)

#### **9.0 How will the school evaluate whether the support in place is helping my child?**

We will evaluate the effectiveness of provision for your child by:

- Reviewing their progress towards their goals each term
- Reviewing the impact of interventions after 6 weeks
- Using pupil questionnaires
- Monitoring by the SENCO
- Using provision maps to measure progress
- Holding an annual review (if they have an education, health and care (EHC) plan)

#### **10.0 How will the school resources be secured for my child?**

It may be that your child's needs mean we need to secure:

- Extra equipment or facilities
- More teaching assistant hours
- Further training for our staff
- External specialist expertise

If that's the case, we will consult with external agencies to get recommendations on what will best help your child access their learning.

If additional funding is needed, we will seek it from our local authority.

#### **11.0 How will the school make sure my child is included in activities alongside pupils who don't have SEND?**

- All of our extra-curricular activities and school visits are available to all our pupils, including our before and after-school clubs.
- All pupils are encouraged to go on our school trips, including our residential trip(s) to the Anderton Centre in Y7.
- All pupils are encouraged to take part in [sports day/school plays/special workshops.
- No pupil is ever excluded from taking part in these activities because of their SEN or disability and we will make whatever reasonable adjustments are needed to make sure that they can be included.

### **12.0 How does the school make sure the admissions process is fair for pupils with SEN or a disability?**

The school's admissions policy can be found at <https://www.athertonhigh.com/admissions/>

### **13.0 How does the school support pupils with disabilities?**

The school's accessibility policy can be found at [Policies – Atherton High School](#)

### **14.0 How will the school support my child's mental health and emotional and social development?**

We provide support for pupils to progress in their emotional and social development in the following ways:

- Pupils with SEN are encouraged to be part of the school council
- Pupils with SEN are also encouraged to be part of a variety of enrichment clubs to promote teamwork/building friendships
- We provide extra pastoral support for listening to the views of pupils with SEN by supporting students with SEND extensively at social times.
- We run a nurture club for pupils who need extra support with social or emotional development.
- We have a 'zero tolerance' approach to bullying.

### **15.0 What support will be available for my child as they transition between classes or setting or in preparing for adulthood?**

#### **Between years**

To help pupils with SEND be prepared for a new school year we:

- Ask both the current teacher and the next year's teacher to attend final meeting of the year when the pupil's SEN is discussed
- Schedule lessons with the incoming teacher towards the end of the summer term

#### **Between schools**

When your child is moving on from our school, we will ask you and your child what information you want us to share with the new setting.

#### **Between phases**

The SENCO of the primary school meets with our SENCO to discuss the needs of the incoming pupils near the end of the summer term.

We arrange meetings with the parents of incoming pupils to discuss how we can best welcome their child into our community.

We are open to visits from students from KS2.

We have transition days, coffee mornings and summer school for SEND students before they begin in year 7.

## **Onto adulthood**

We provide all our pupils with appropriate advice on paths into work or further education.

We work with the pupil to help them achieve their ambitions, which can include goals in higher education, employment, independent living and participation in society.

We prioritise SEND students as part of our CEIAG program.

### **16.0 What support is in place for looked-after and previously looked-after children with SEN?**

Children who are looked-after or previously looked-after will be supported much in the same way as any other child who has SEND. However, looked-after pupils will also have a personal education plan (PEP). We will make sure that the PEP and any SEN support plans or EHC plans are consistent and complement one another. This process will be the responsibility of Julie Lowe (SENCo).

### **17.0 What should I do if I have a complaint about my child's SEN Support?**

Complaints about SEN provision in our school should be made to the Head of Year/SENCo at [enquiries@athertonhigh.com](mailto:enquiries@athertonhigh.com) in the first instance. They will then be referred to the school's complaints policy.

If you are not satisfied with the school's response, you can escalate the complaint. In some circumstances, this right also applies to the pupil themselves.

To see a full explanation of suitable avenues for complaint, see pages 246 and 247 of the [SEN Code of Practice](#).

If you feel that our school discriminated against your child because of their SEND, you have the right to make a discrimination claim to the first-tier SEND tribunal. To find out how to make such a claim, you should visit: <https://www.gov.uk/complain-about-school/disability-discrimination>

### **18.0 What support is available for me and my family?**

If you have questions about SEND, or are struggling to cope, please get in touch to let us know. We want to support you, your child and your family.

To see what support is available to you locally, have a look at your local authority's local offer. Wigan Council publishes information about the local offer on their website:

<https://www.wigan.gov.uk/Resident/Education/Special-Educational-Needs-and-Disability/Local-Offer/index.aspx>

Our local special educational needs and disabilities information advice and support services (SENDIASS) organisations are:

<https://www.wigan.gov.uk/Resident/Education/Special-Educational-Needs-and-Disability/Local-Offer/SENDIASS-contact.aspx>

Local charities that offer information and support to families of children with SEND are:

National charities that offer information and support to families of children with SEND are:

[IPSEA](#)

[SEND family support](#)

[NSPCC](#)

[Family Action](#)

[Special Needs Jungle](#)

## 19.0 Glossary

**Access arrangements** – special arrangements to allow pupils with SEND to access assessments or exams

**Annual review** – an annual meeting to review the provision in a pupil's EHC plan

**Area of need** – the 4 areas of need describe different types of needs a pupil with SEND can have. The 4 areas are communication and interaction; cognition and learning; physical and/or sensory; and social, emotional and mental health needs.

**CAMHS** – child and adolescent mental health services

**Differentiation** – when teachers adapt how they teach in response to a pupil's needs

**EHC needs assessment** – the needs assessment is the first step on the way to securing an EHC plan. The local authority will do an assessment to decide whether a child needs an EHC plan.

**EHC plan** – an education, health and care plan is a legally-binding document that sets out a child's needs and the provision that will be put in place to meet their needs.

**First-tier tribunal/SEND tribunal** – a court where you can appeal against the local authority's decisions about EHC needs assessments or plans and against discrimination by a school or local authority due to SEND

**Graduated approach** – an approach to providing SEN support in which the school provides support in successive cycles of assessing the pupil's needs, planning the provision, implementing the plan, and reviewing the impact of the action on the pupil

**Intervention** – a short-term, targeted approach to teaching a pupil with a specific outcome in mind

**Local offer** – information provided by the local authority which explains what services and support are on offer for pupils with SEN in the local area

**Outcome** – target for improvement for pupils with SEND. These targets don't necessarily have to be related to academic attainment

**Reasonable adjustments** – changes that the school must make to remove or reduce any disadvantages caused by a child's disability

**SENCO** – the special educational needs co-ordinator

**SEN** – special educational needs

**SEND** – special educational needs and disabilities

**SEND Code of Practice** – the statutory guidance that schools must follow to support children with SEND

**SEN information report** – a report that schools must publish on their website, that explains how the school supports pupils with SEN

**SEN support** – special educational provision which meets the needs of pupils with SEN

**Transition** – when a pupil moves between years, phases, schools or institutions or life stages